



**Eastern Mediterranean
University**



Faculty of Architecture
Department of Interior
Architecture

Department of Interior Architecture
2022/2023
Spring Semester

*Graduation
Catalogue*





2022-23 SPRING
2022-23 BAHAR

Famagusta Port Departure Terminal Design Project
Mağusa Limanı Gidiş Terminali İç Mekan Tasarımı Projesi

Nil Paşaoğlular Şahin Kamil Güley Banu Tevfikler
Erhan İlhan Nisan Akalın

Guest Jury Members: Hasan Özyalçın & Ürün Albayrak
Afet Ç Coşkun & Ahenk Y Damgacı



INTERIOR ARCHITECTURE STUDIO
İÇ MİMARLIK ATÖLYESİ - VI

402



Assoc. Prof. Dr.
Afet Çeliker Coşkun
Chair of Department
of Interior Architecture

Dear young Interior Architects,

It's time to equip yourself with all the knowledge you have gained during your education at Eastern Mediterranean University and start your professional life. First of all, congratulations to each and every one of you on this achievement! Always remember that when you design spaces with your own approach, the sensitivities and awareness you adopt, you are actually designing human lives as well. Aim to design functional spaces with high quality of life that each individual can use and feel good about. Universal design and human life will be your focus; become an interior architect who respects the environment, is compatible with history and culture, and always follows innovations and all contemporary developments. Even if you face difficulties, know that it is always in your hands to reach your target point, and make it happen.

Have a successful life journey. . .

Congratulations. . .



Assoc. Prof. Dr.
Banu Tefikler Cavufođlu

Dear Proud Interior Architect,

Design is the embodiment of change, it reflects change, and it is a social action. You are now an Interior Architect; and you are faced with new confrontations. Today, the diversity and complexity of the subjects of design has increased. With the education you received here, we worked hard to bring you a multi-disciplinary perspective to design. Remember that the only way out in this evolving mess environment is interdisciplinary collaboration. What you need to understand by multidisciplinary or interdisciplinary collaboration is to push the limits of creativity, to break down walls instead of fixed doors and windows. What I want from you is to be intellectual as designers who are more curious, more enthusiastic, more interested, able to relate, share, not afraid to experiment, find answers in different ways, and adapt to different situations. Wherever you are, never settle for what is. How you look is as important as what you look at. While looking for an answer to the what, the real issue is to find the answer to the how. In fact, the task of the designer is to connect what seems to be disconnected. In doing so, seek to create both local and universal values. Change your surroundings, change the world; because we have prepared you for development and change for the better. May luck be with you..

Banu Tefikler Cavufođlu

Course Instructors



Assoc. Prof. Dr.
Banu Tevfikler Çavuşoğlu



Res. Asst.
Nisan Akalın

ROZHIN EHYAEI

MERVE CANSU ÖZKAN

NAYA ALI DEIB

AHMED MUNIR K. ALHELOU

FURKAN CIVEK

EREN CAN UYAN

AYGÜL AYDENER

ESRA ER

IANA CHERNYSHEVA

HAKAN BERK BAŞMAN

NARIN BOŞNAK

ANEL TURGANBAYEVA

RAWAN SDQI ALI ALI

BASMA KHALED A. ABDELAZIZ

ROSHAN ZANDI

INAR 492 2022-23 SPRING SEMSTER GRADUATION PROJECT STUDENT LIST

Project Brief

Within the scope of Interior Architectural Design Studio VI, in the 2022-23 academic year Spring Semester, the given building (attached) is expected to be designed into the Departures Terminal of the Famagusta Port under today's conditions and needs of the transportation sector.

The Departures Terminal design will be composed of a Lounge, a Duty-Free, and a Short Term Stay Hotel (2-3 rooms) functions, as the main functional areas. Within the project's scope, the students are asked to develop a scenario in which the main functions can be specified and detailed within the given subject. At the starting phases of the design process, the students need to search for examples of "Departure Terminals" from the world; and to analyze the space's functional program, with a further concentration on space, function, activity setup, integrated building systems as heating/cooling/ventilation/fire and safety, universal and responsible design aspects.

The students are also expected to develop a distinctive spatial identity for the place to be designed and refer to this identity as an effective asset in creating the characters of all related spaces.

Projects

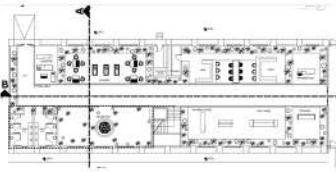
Concept

My personal synthesis is: industrial site + no nature (cyprus attraction)

- Cyprus has beautiful nature that is not present in the site
- Industrial texture site but touristic
- Citrus (lemon) tree emphasizing the rich nature of Cyprus

Concept: Industrial Jasmine

- the flower
- jasmine ivy
- pure
- harmony
- smoothness
- calming aura and look



Process

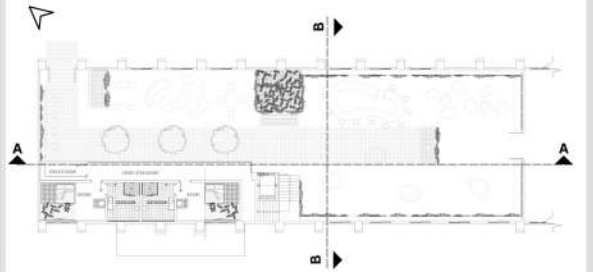
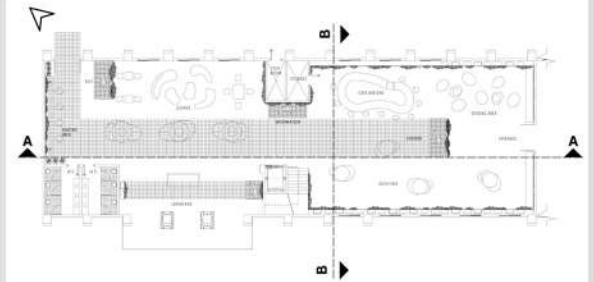
ROZHIN EHYAEI

16700144

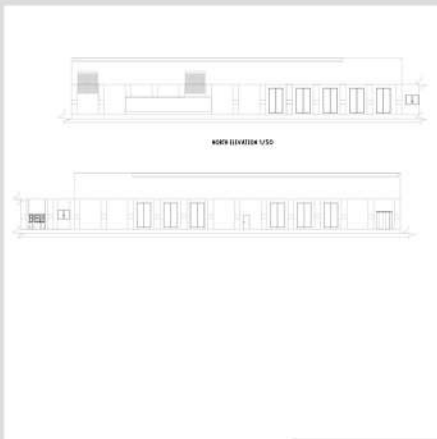
2022-23 SPRING



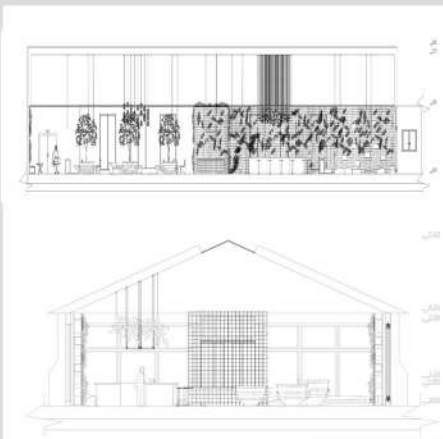
3D



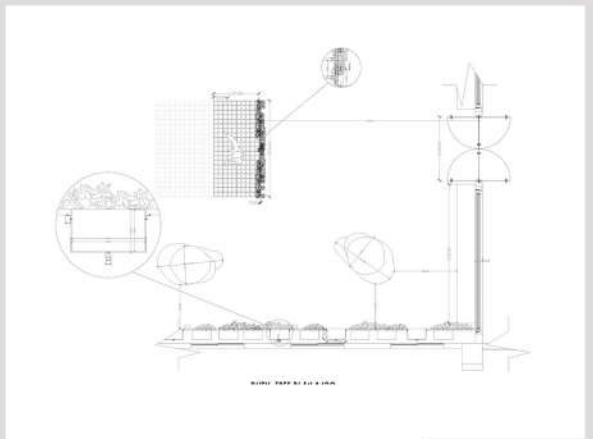
Plan



Elevation



Section



Plan

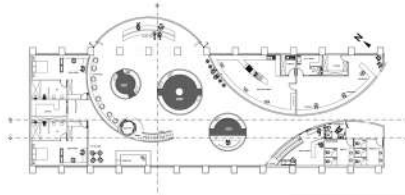
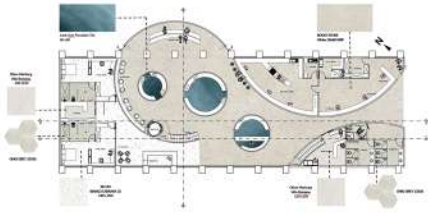
Concept

"AMMOHOSTOS"

Hidden in the Sand

The aim of the project is to create a lasting impression on those who utilize the Departure terminal. I brought together sand textures and the unique colors of the sea to remind them of the unique sand and sea of Famagusta for the last time.

Curvy waves of the sea is reflected to the walls of the building and with little touch of sand I created the last impression of Ammohostos.

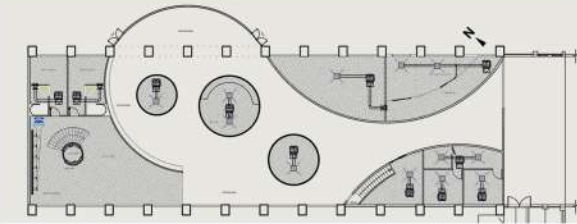
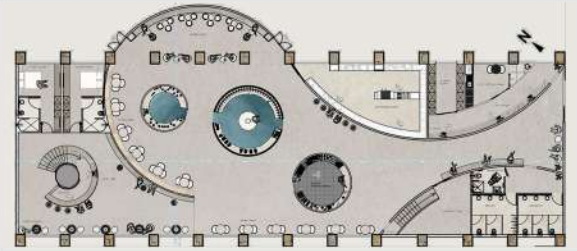


Process

MERVE CANSU
ÖZKAN

17330074

2022-23 SPRING



3D

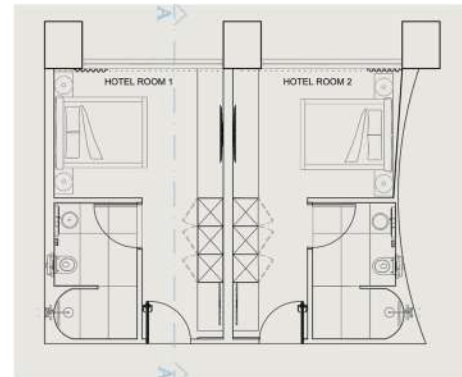
Plan



Elevation



Section



Plan

Concept

The idea came from the arches in the old city. Every time I go there, I am amazed by the architecture that was there. When we went to visit the site there were also arches inside the port, and they are functionally integrated into the port as gates. In the old city as well, we see it as gates, corridors, windows, and doors and even they form subspaces under them. It is used in one way or another. Cyprus is an island full of stories behind the walls that many eras passed through, the effects of which we still see to this day, so I decided in my project with the help of my teachers to achieve a reflection of the historical features of the city in a way that serves the design project functionally and esthetically. The use of materials and textures in the floor and walls reflects this concept, and it was combined with new materials to achieve the required concept through the lighting elements specially. From the entrance we can directly ask for any information through the information desk, and we can exchange our money to the currency we want before we travel, we can prepare ourselves as women in the (make-up trial section) as if we have a meeting after travel, the purchase departments in the duty-free market depend on the site. Which lies close to the sea and is a station for departure or arrival, so we need skin care, such as using sunscreen, for example, especially because travel hours are often long. I use led light in more in arches to emphasize it and to make the users feel this curve more. The place welcomes everyone the entrances to the building are wide enough to accommodate wheelchairs for disabled people and there is elevator too and it is suitable for the elderly.



Process

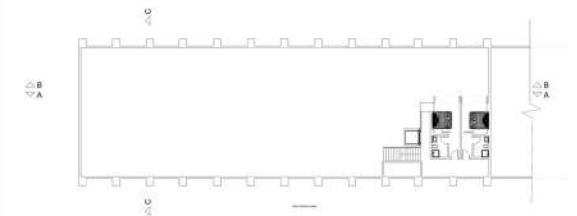
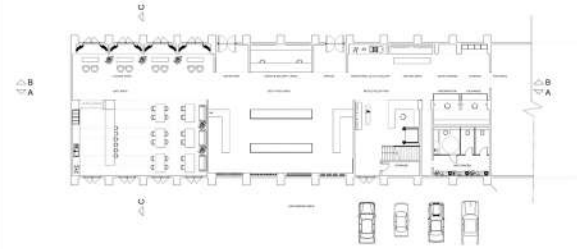
NAYA ALI
DEIB

17700118

2022-23 SPRING



3D



Plan



Elevation



Section

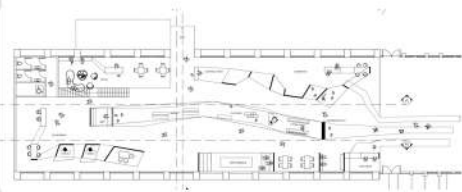


Plan

Concept

The harbour is bustling with attractions, including an information screens, cultural exhibiton, market place, and a hotel with sea views. Visitors can explore various activities and amenities, making it a perfect blend of commerce and culture.

Connection Lines is the concept: connecting individual elements or components in a way that forms a functional whole, showcasing the power of connections and collaborations in shaping functional designs by connecting city to the world.



Process

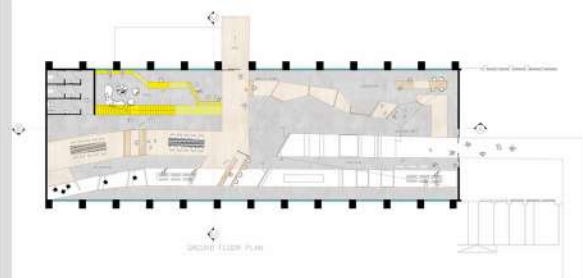
AHMED MUNIR
K. ALHELOU

17701904

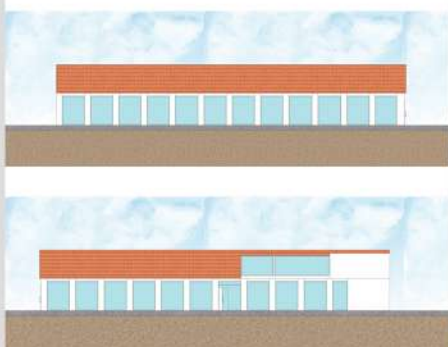
2022-23 SPRING



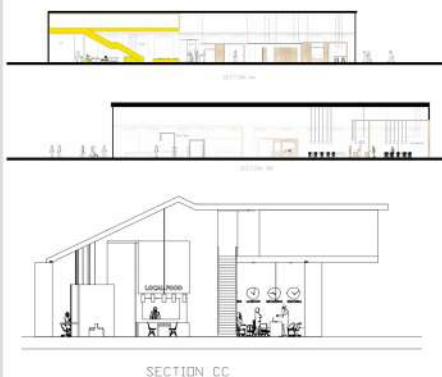
3D



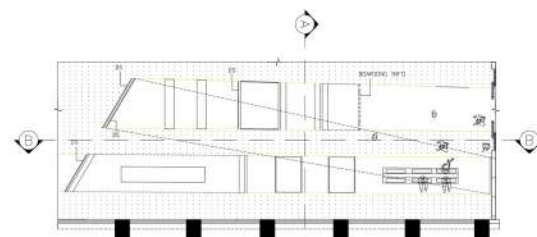
Plan



Elevation



Section

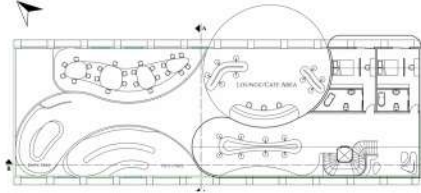
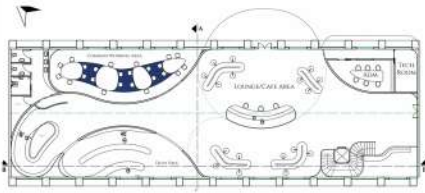


Plan

Concept

A port is both a meeting point and a departure point for a city. Our building, which serves as a departure terminal, is a point where passengers from different places come and go. The cafe and lounge area, which is one of the indispensable areas of a port and where passengers come together and socialize, will also be a meeting and departure point in the design of the port.

The cafe lounge area, which is the meeting and departure point of the port, will form an axis where passengers gather and separate from various functions around. This axis will be accompanied by a parametric design consisting of merged and separated forms. The parametric design will offer passengers a guiding flow.



Process

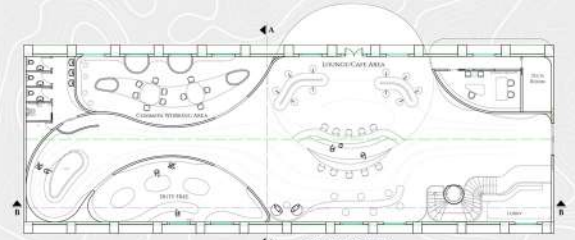
FURKAN CİVEK

18000505

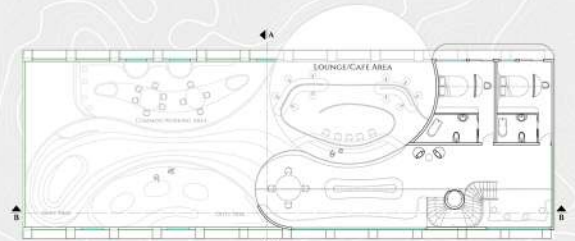
2022-23 SPRING



3D



GROUND FLOOR PLAN
SCALE: 1:100



MEZZANINE FLOOR PLAN
SCALE: 1:100

Plan



Elevation



Section



HOTEL ROOM DETAILED PLAN

Plan

Concept

It refers to structures that can be designed in a flexible and temporary way, nourishing the existing structure and reconstructing the form.



Process

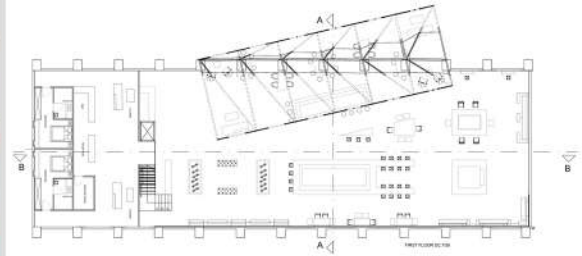
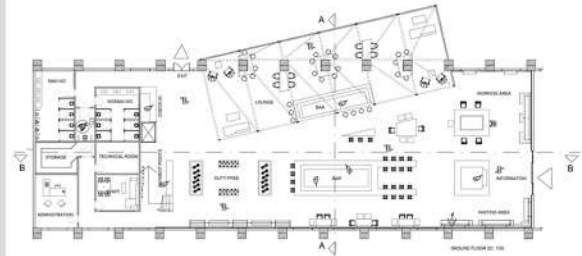
EREN CAN
UYAN

18000505

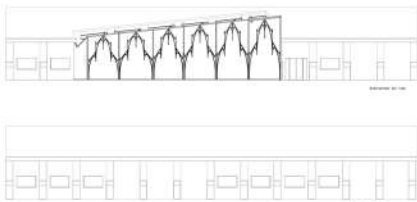
2022-23 SPRING



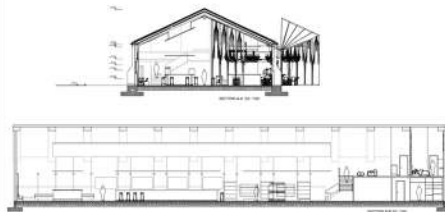
3D



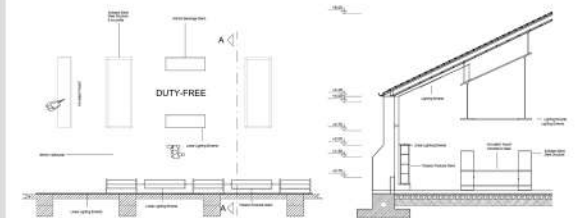
Plan



Elevation



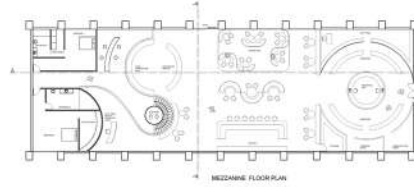
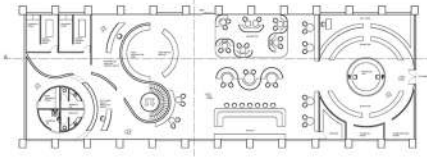
Section



Plan

Concept

First of all, the port of Famagusta played an important role in the commercial and business enrichment of the city of Famagusta. Because there was a trade based on the products produced in the east and the products in the west being transported by sea and changing hands. My concept is about water and sound of the water. The movements, sight reduce the stress level in people. Inspired by these properties of water, I will reflect the movement, texture and if necessary, the sound of water into the building I will design



MEZZANINE FLOOR PLAN

Process

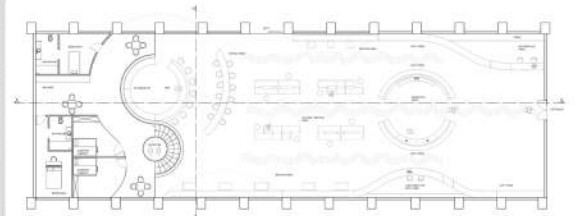
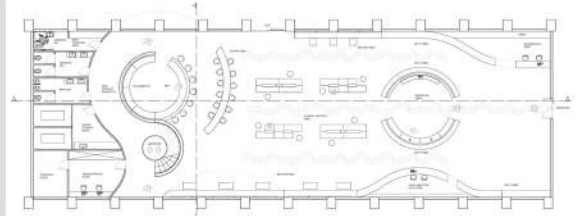
AYGÜL AYDENER

18331392

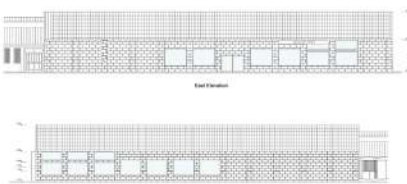
2022-23 SPRING



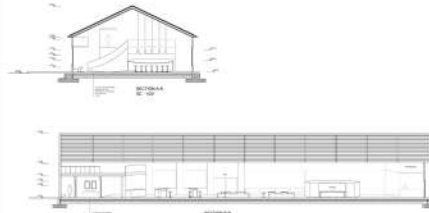
3D



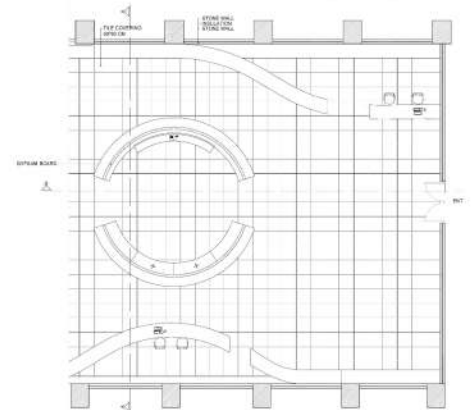
Plan



Elevation



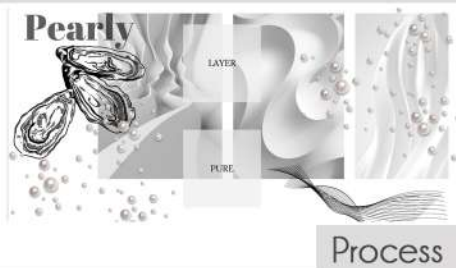
Section



Plan

Concept

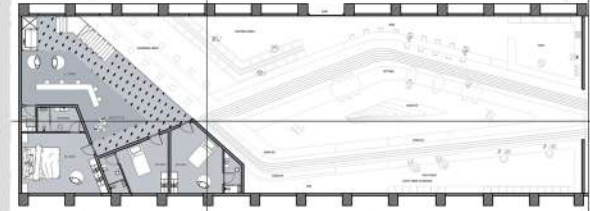
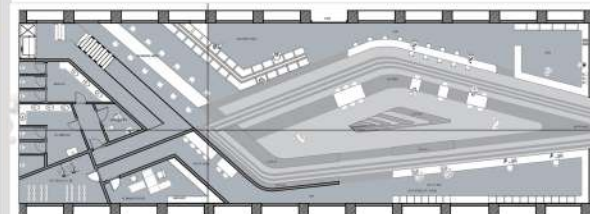
The formation of the pearl in the oyster is actually the result of a kind of self-protection mechanism of the oyster. A grain of sand or any waste that enters through its shells is perceived by the oyster as a foreign substance. In order to protect itself, the oyster begins to surround this foreign substance with a hard, solid, strong and shiny mother-of-pearl mineral called the "mother of pearl". Over time, this foreign substance, which is covered with more mother of-pearl, eventually turns into a shiny and hard stone. This stone is called pearl. There is an industrial appearance around the project area and the wastes arising from this situation. In this terminal, which is the project area, it is a white space within all the industrial appearance like the pearl formed by the oyster



ESRA ER

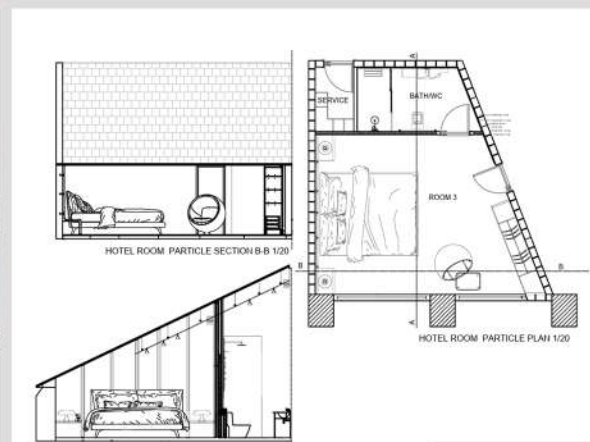
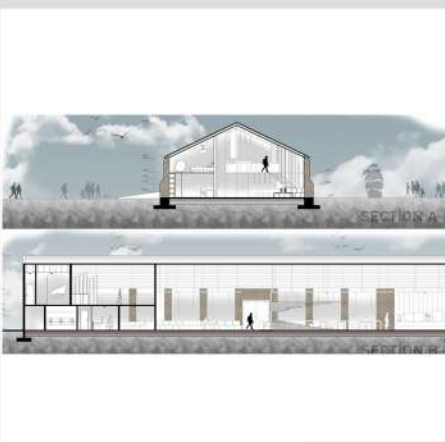
18331393

2022-23 SPRING



3D

Plan



Elevation

Section

Plan

Concept

The design concept of the new international seaport in Northern Cyprus is aimed at interlock culture between near countries. At the same time, to emphasize the uniqueness of the culture and identity of Cyprus. It will be a beacon of progress and prosperity, connecting Northern Cyprus with the world and establishing new relations for the future showing patterns.

Mood board

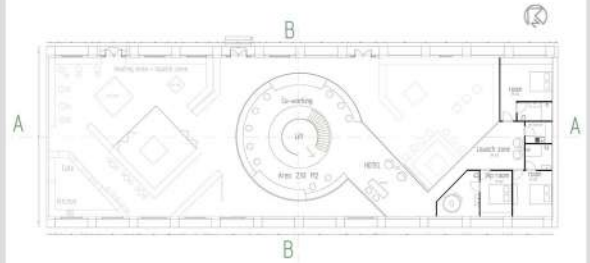
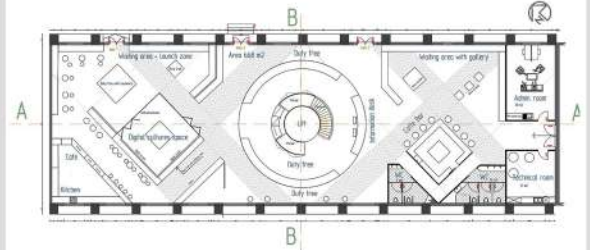


Process

IANA CHERNYSHEVA

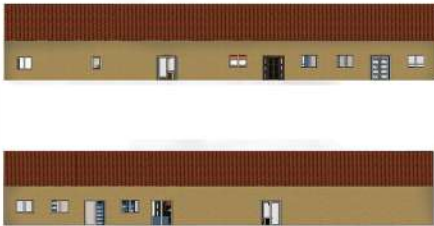
18700068

2022-23 SPRING



3D

Plan



Elevation



Section

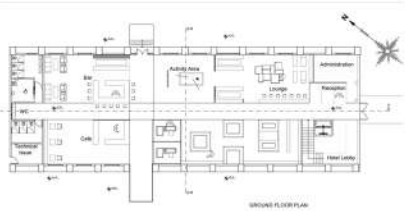


Plan

Concept

The port is the most important line between the sea and the city. In my concept, This line is a unique point that connects the city with the passengers coming from the sea. Also, the connection point of the line is working like the heart of the building, which connects the functions between each other. And this line will feed other spaces with various functions. And the industrial harbour atmosphere created with the containers.

In my scenario, I will create an industrial harbour atmosphere. Since the port is the highest point of trade, the containers carried by trucks and ships are the things that create the most crowded circulation. Therefore, open and closed spaces will be connected to my existing line and reflect the atmosphere of the port. At this important point located between Famagusta walled city and the Mediterranean Sea, the passengers who will travel inspired by the way the functions in the design are connected to the line when they enter the building. And will continue on their way after they see and scatter among the functions.



GROUND FLOOR PLAN



MEZZANINE FLOOR PLAN

Process

HAKAN BERK BAŞMAN

19330966

2022-23 SPRING



Lumion



Lumion

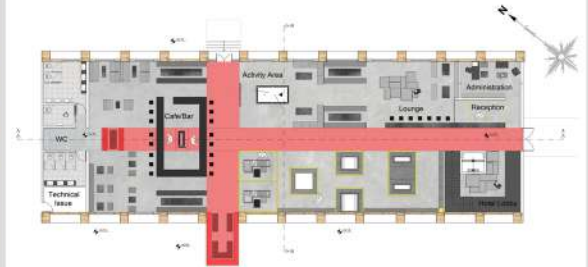


Lumion



Lumion

3D



Mezzanine Floor Plan Scale: 1/100



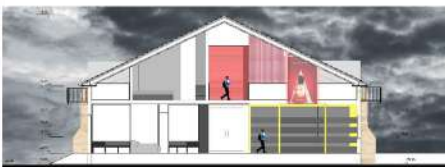
Plan



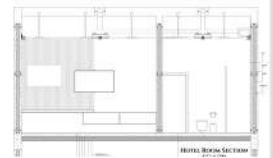
Elevation



Section



MEZZANINE SECTION Scale: 1/100



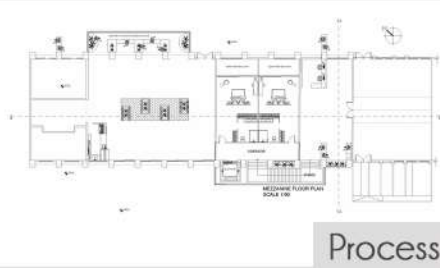
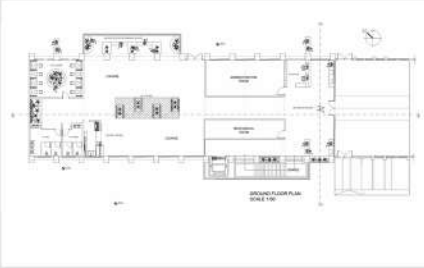
MEZZANINE SECTION Scale: 1/100

Plan

Concept

LINK BETWEEN THE CULTURAL CITY AND THE SEA

It is well-known for its rich heritage and traditions, as well as its stunning, vivid blue sea and historic, old ruins. The Mediterranean's nature and people have captured the hearts of the globe.



Process

NARIN
BOŞNAK

19330967

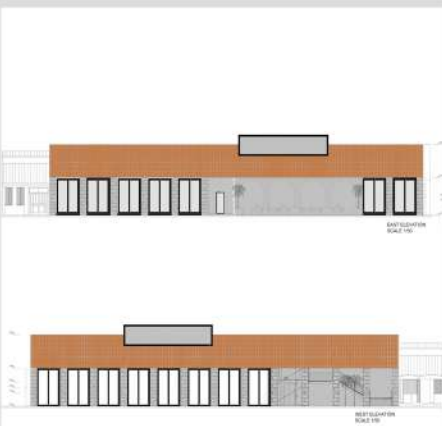
2022-23 SPRING



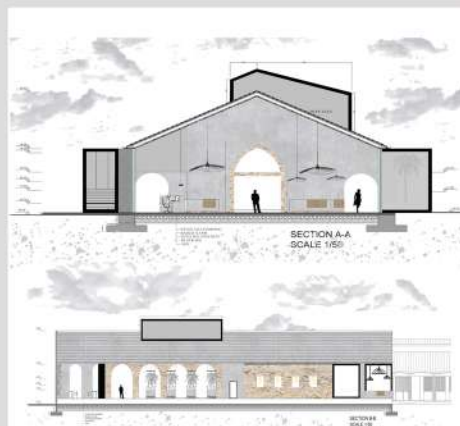
3D



Plan



Elevation



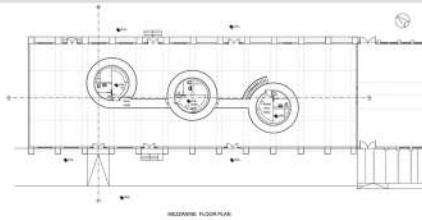
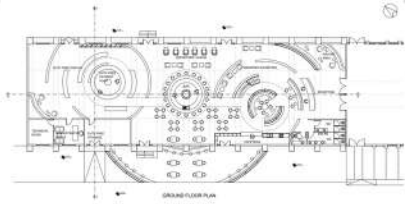
Section



Plan

Concept

The name of a graduation project is Famagusta Port Departure Terminal. I named my concept "Water has Memory". As water travels it collects and stores information from different parts of the world. Thus, I wanted to reflect this philosophy into my design and help people form their sensory memories about this port.

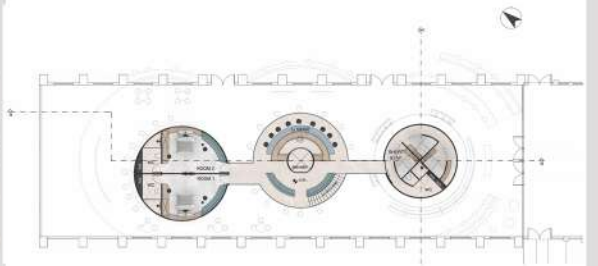
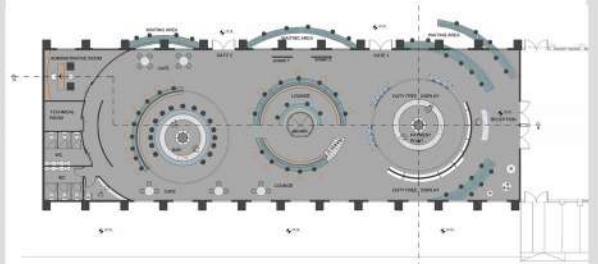


Process

ANEL
TURGANBAYEVA

19700466

2022-23 SPRING

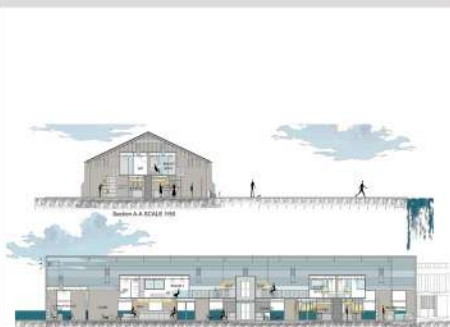


3D

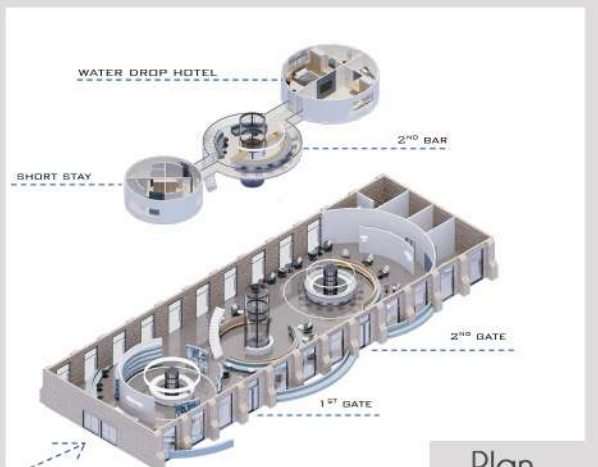
Plan



Elevation



Section



Plan

Concept

initially the design concept was inspired from how the water flows between rocks and how the experience of traveling is like the flow of water in between rocks, to be directed and to flow with a continual change of places, from being directed to scattering. in my design concept I have two main elements representing the rocks in which people are flowing between these elements. starting the flow of people from the pulling agent which is the duty free where it guides people toward the lounge area in which people scatter and spend their time there and as they are done they turn around the rock out to their ships.

MOOD BOARD



Process

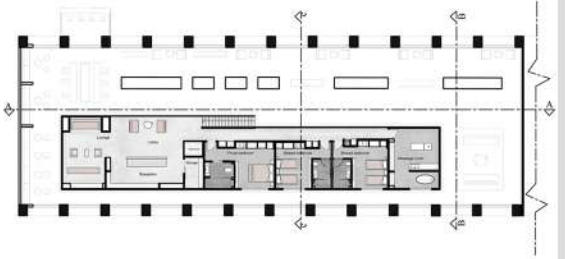
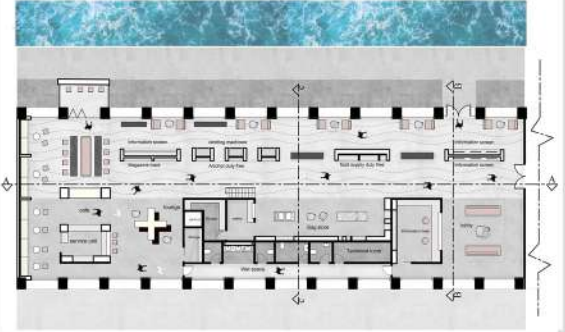
RAWAN SDQI
ALI ALI

19700572

2022-23 SPRING



3D



Plan



Elevation



Section B-B

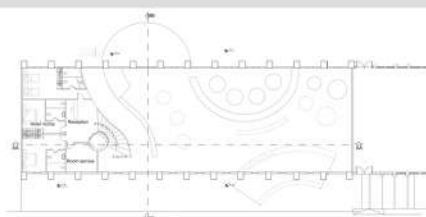
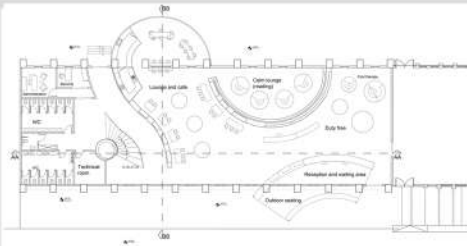
Section



Plan

Concept

My first idea came from site syntysis. The walled city is a touristic area. Everything is more fun here, a life for tourists. The part of our building represented business life. Monotonous, stressful and metropolitan life. As a design idea, I started from the idea of the right and left brain, which has also been found in psychology. The right brain represents colors. The left brain represents achromatic colors. This is how the atmosphere came into being. The concept, on the other hand, was the concept of staying in between these two different thoughts.



Process

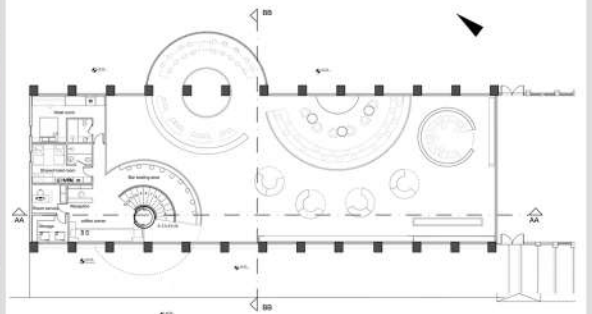
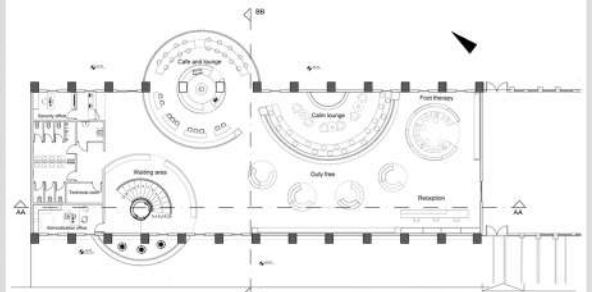
BASMA KHALED A.
ABDELAZIZ

20700320

2022-23 SPRING



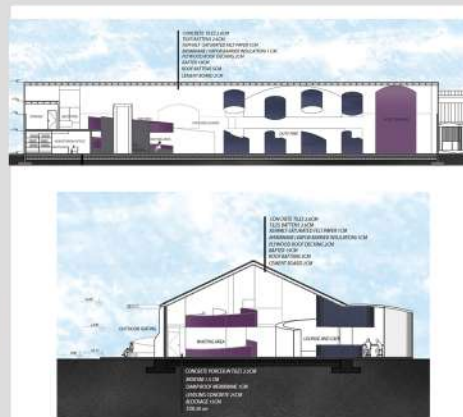
3D



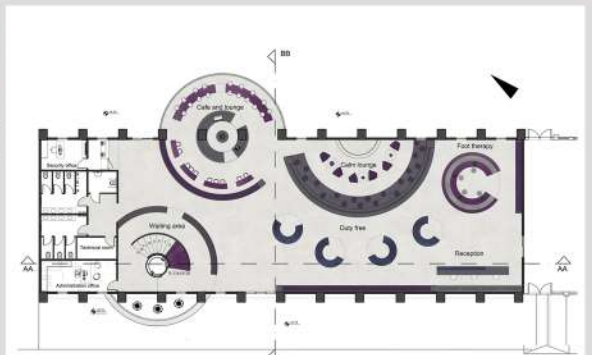
Plan



Elevation



Section



Plan

Concept

Synthesis & Concept:

- Embracing the city experience
- Sensory experience
- Public landscape
- Space within space
- History of city & building
- Glimpse of future

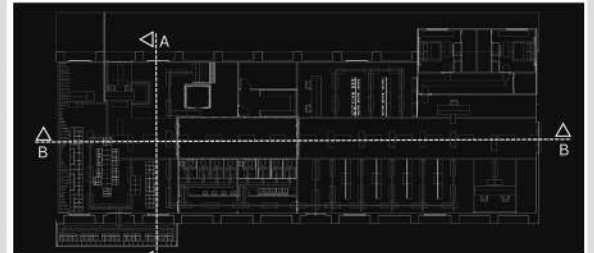


ROSHAN ZANDI

20803530

2022-23 SPRING

Process

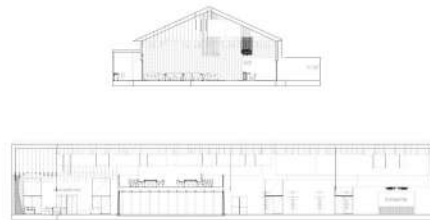


3D

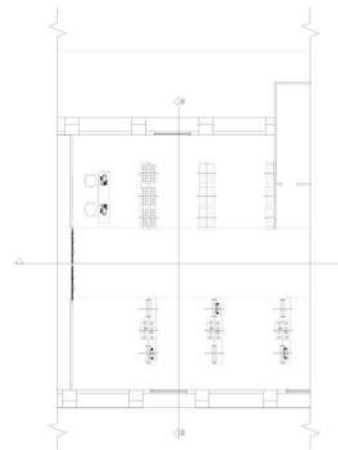
Plan



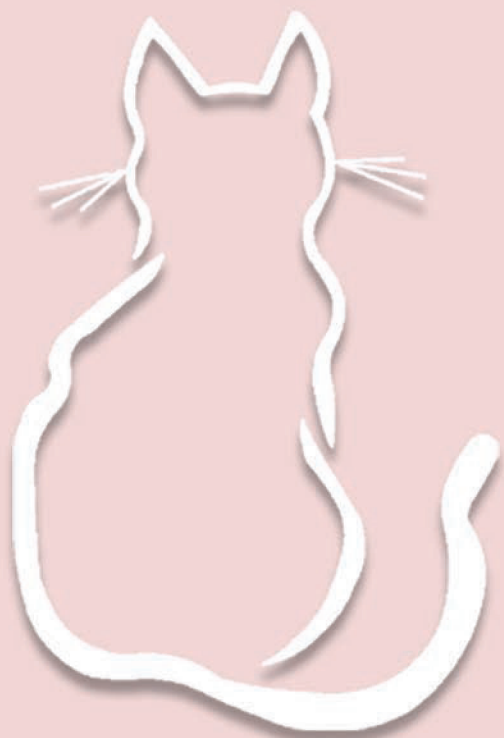
Elevation



Section



Plan



Department of Interior Architecture

2022/2023

*Graduation
Catalogue*

